

EAP Power Up

Units 3,4,6,7

Instructor: Mr. Li-sheng Lee,

National Taiwan University

Course Title: Academic English for Management

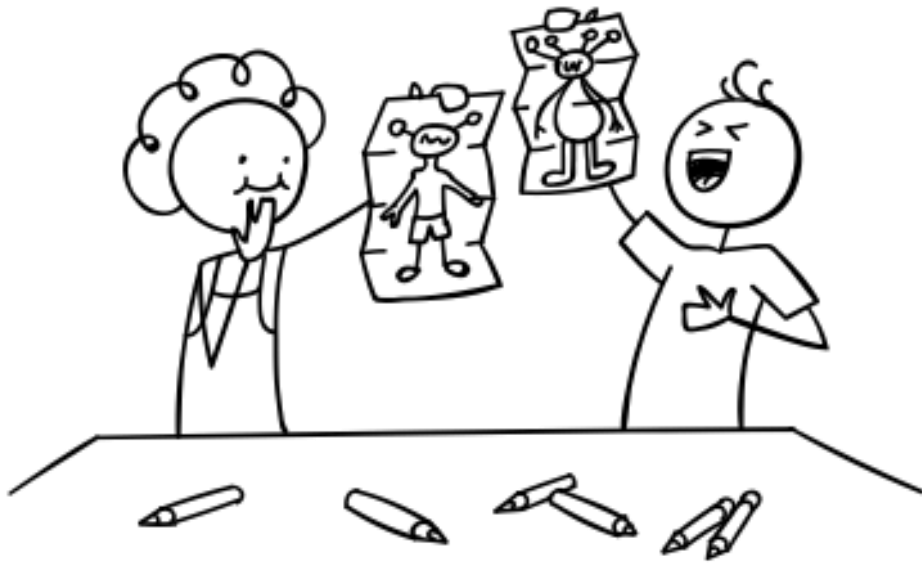
Weekly Topic: Integrated Speaking



Lesson outline

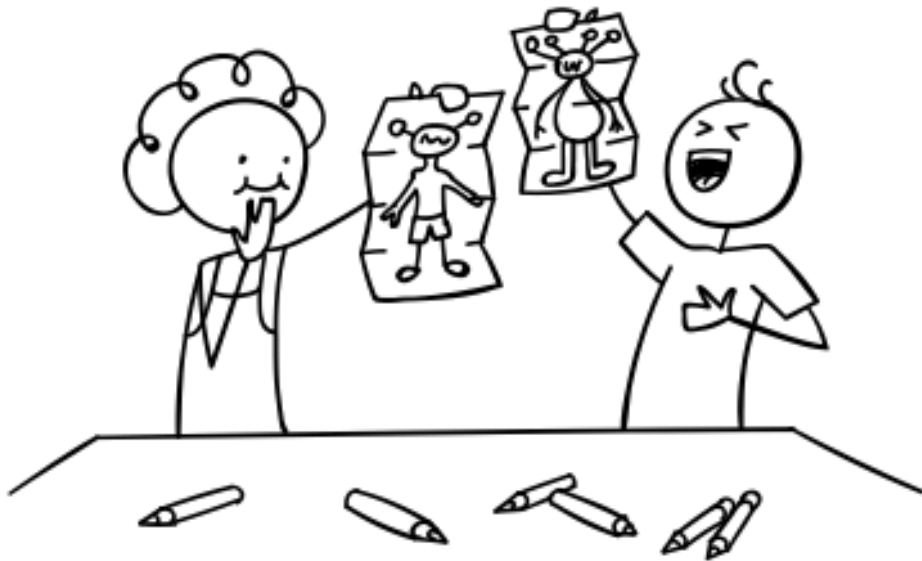
- Warm-up/introduction
- Useful vocabulary and expressions
- Recommended structures and approaches
- Demonstration
- Integrating information
- Describing contradictory data
- Tips for summarizing and paraphrasing

Warm-up



- Each person will receive a graph.
- One person describes the graph without showing it to their partner.
- The other person draws the graph based on the description.
- Switch roles and repeat the process.
- Compare your drawings to the original graphs.

Reflection



- Was the exercise difficult?
How so?
- Which elements were easier or more difficult to describe?

Why integrated L2 speaking?

Higher Education

Students are frequently asked to speak based on course materials, such as discussing assigned readings, statistical data, or lectures.

Workplace

Employees often need to discuss and present reports or proposals based on thorough research and analysis.

Everyday life

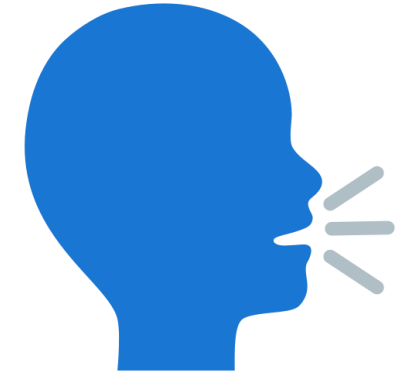
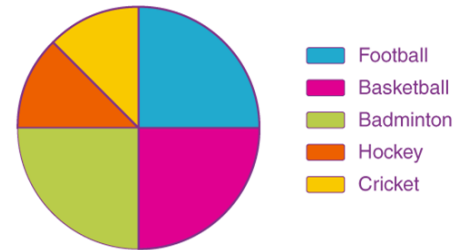
We often share information we have learned from various sources with those around us, such as a graph we came across or a news story we happened to read.

Different types of graphs

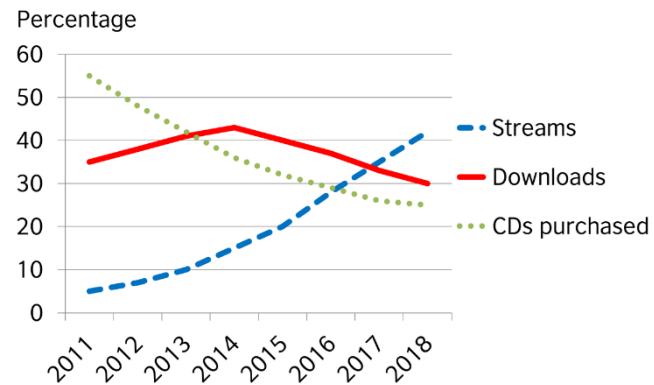
Reasons for attending the arts - UK adults (all numbers below are percentages)

	20 years ago	10 years ago	today
Desire to see specific performer/artist	58	55	56
Accompanying children	9	15	24
Special occasion/celebration	27	20	9
Work/business	6	10	11

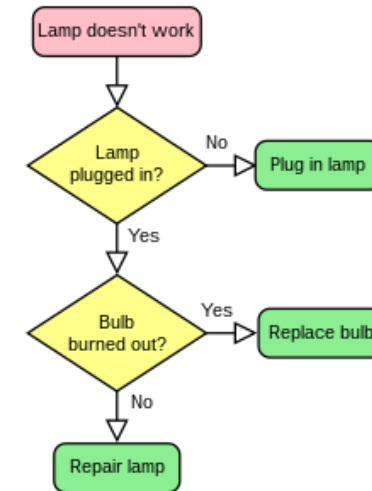
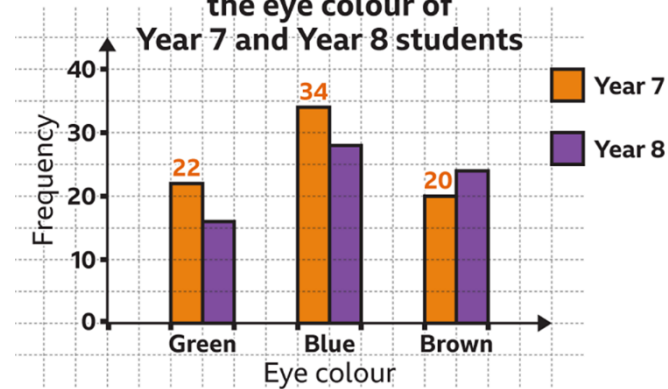
Favourite Sports Percentage



Percentage of total music sales by method



A dual bar chart to show the eye colour of Year 7 and Year 8 students



Editorial

Study in Your Own Way for Best Results

Each of us has a unique learning style. We learn best when we study according to that style. For example, in a course that focuses on theory, students who prefer reading input have a great advantage. However, when it comes to workshops, hands-on learners do much better than verbal learners.





Useful vocabulary and expressions

Upward trend

Noun:

a climb/a rise/an increase/a surge

Adjective:

drastic/substantial/sharp/rapid

Verb:

to climb up/to rise/to increase/to
grow/to shoot up/to surge

Adverb:

drastically/substantially/sharply/
rapidly



Downward trend



Noun:

a fall/a plunge/a decrease/a decline/
a drop

Adjective:

noticeable/severe/heavy

Verb:

to decline/to decrease/to fall/
to plunge/to drop

Adverb:

noticeably/severely/heavily

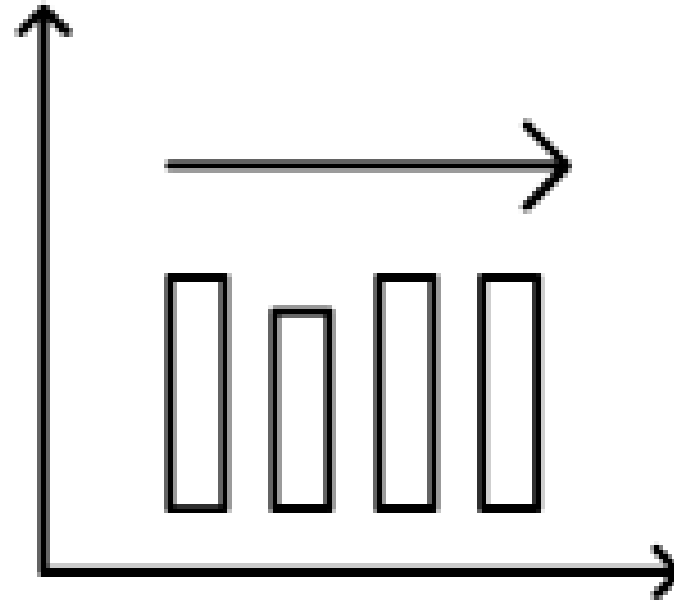
Stable trend/slight changes

Noun:
a plateau

Adjective:
steady/slight/stable

Verb:
to remain/to flatline/to level off

Adverb:
steadily/slightly/stably





Structure / Approach

Recommended structure

Paragraph	Content
1	one sentence explaining what the graph shows one sentence describing the x-axis and y-axis
2	describe the overall trend
3	describe the first trend
4	describe the second trend <u>by contrasting with the first trend</u> (optional) end with personal interpretations

Approach

- Introduction
 - What is the title of the graph?
 - What do the x-axis and y-axis represent?
- Main trend
 - What is the general trend of the graph?
 - Does it show an upward, downward, or steady movement?
- Details
 - What interesting facts are illustrated in the graph?
- Personal connections (optional)
 - Can you relate to the details shown in the graph?
 - Are they similar or different to your own experiences? In what way?
- Conclusion
 - What are the most important takeaways?



Break Time!





Demonstration

Demonstration



Figure 2 Devon City Hospital: Projected market growth in health related AI technology

Demonstration (approach)

- Introduction
 - What is the title of the graph?
 - What do the x-axis and y-axis represent?
 - What do the solid line and dotted line represent?
- Main trend
 - What is the general trend of the graph?
 - Does it show an upward, downward, or steady movement?
- Details
 - What interesting facts are illustrated in the graph?
- Personal connections (optional)
 - Can you relate to the details shown in the graph?
 - Are they similar or different to your own experiences? In what way?
- Conclusion
 - What are the most important takeaways?

Demonstration

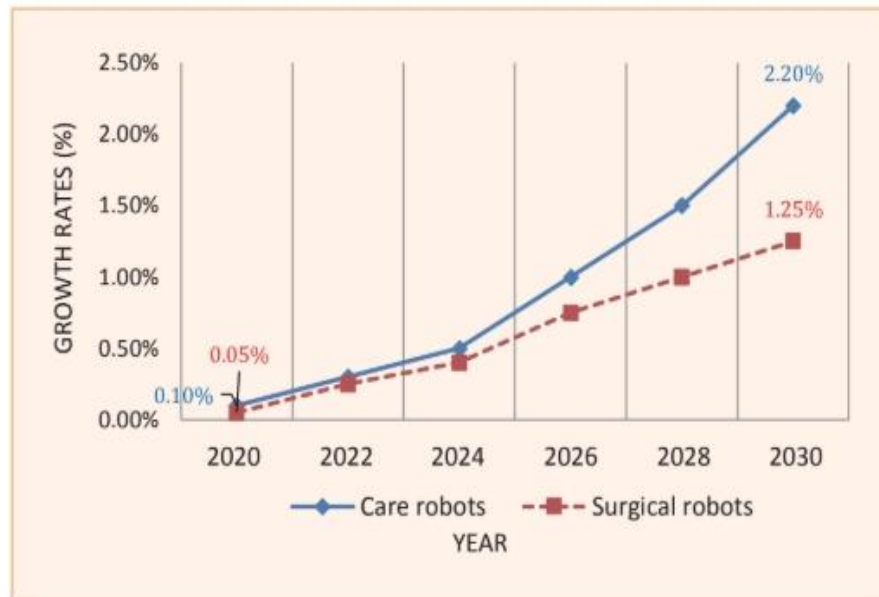


Figure 2 Devon City Hospital: Projected market growth in health related AI technology

This line graph depicts the projected market growth in health related AI technology in Devon City Hospital. The x-axis represents the year while the y-axis represents the growth rate. The **blue solid line** illustrates the projected growth for care robots whereas the **red dotted line** signifies surgical robots. **A rapid growth is expected** in the sales of care robots from a rate of 0.1% in 2020 to 2.2% in 2030. Surgical robots are also **on the rise**, though at a slower rate. This suggests a big increase in AI tech being used in healthcare over the next decade.



Practice 1

Practice



Figure 1 Employment rates of Jin Tai University graduates (2018–2023)

Practice

Identify Key Information

- The question and the heading:
- The categories:
- Data contained:



Figure 1 Employment rates of Jin Tai University graduates (2018–2023)



Speaking vs. Writing

Speaking vs. Writing

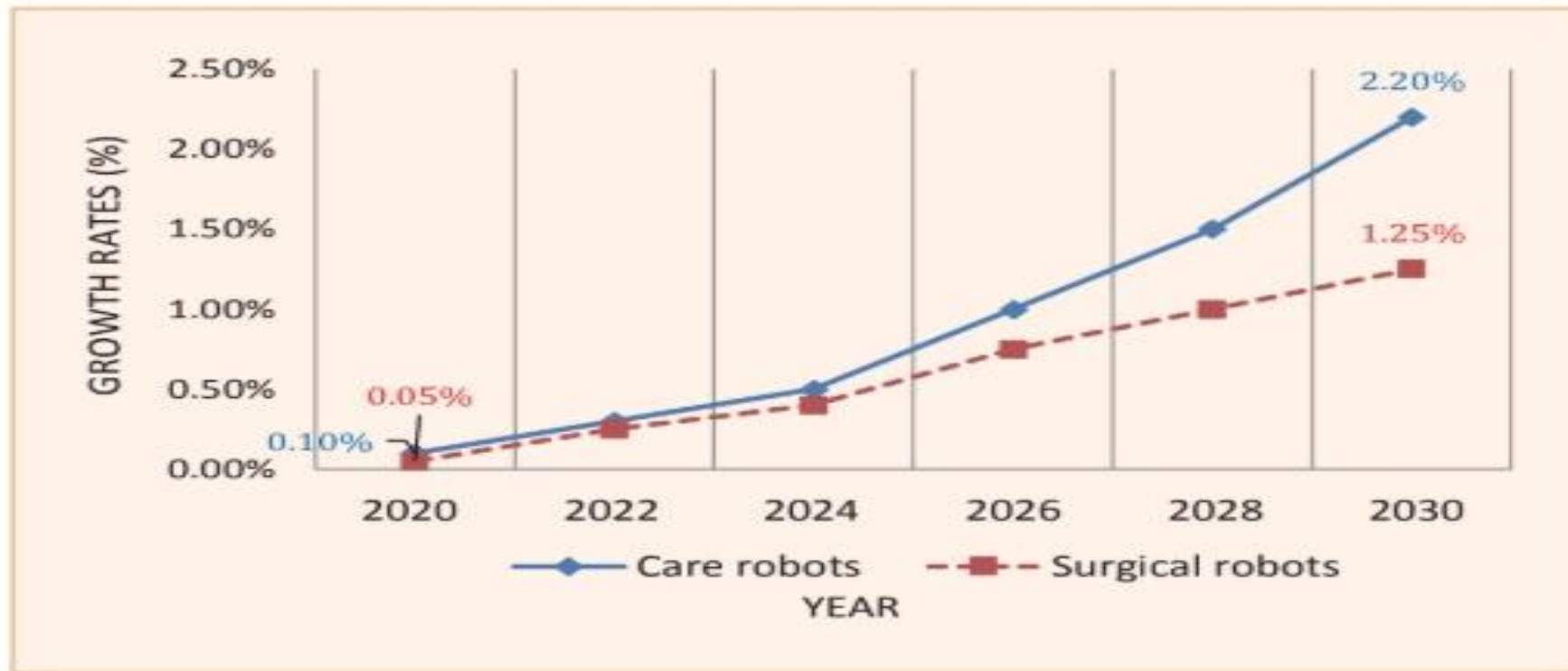


Figure 2 Devon City Hospital: Projected market growth in health related AI technology

Speaking vs. Writing

The graph illustrates the projected market growth of health-related AI technology at Devon City Hospital from 2020 to 2030. Care robots are expected to see a substantial increase from 0.1% in 2020 to 2.2% in 2030. Similarly, care robots are projected to grow from 0.05% in 2020 to 1.25% in 2030, indicating a significant rise in the adoption of AI technology in healthcare over the decade.

Looking at this graph, we can see how much health-related AI technology at Devon City Hospital is expected to grow from 2020 to 2030. Rapid growth is expected in the sales of care robots from a rate of 0.1% in 2020 to 2.2% in 2030. Surgical robots are also on the rise, though at a slower rate. This suggests a big increase in AI tech being used in healthcare over the next ten years.

- Compare the two descriptions.
- Determine which one is the oral description and which one is the written description.
- What are the indicators?

Revisit Practice 1



Figure 1 Employment rates of Jin Tai University graduates (2018–2023)

Revisit Practice 1

- Revisit your oral description.
- What elements would you adjust if you were to turn it into a written description?

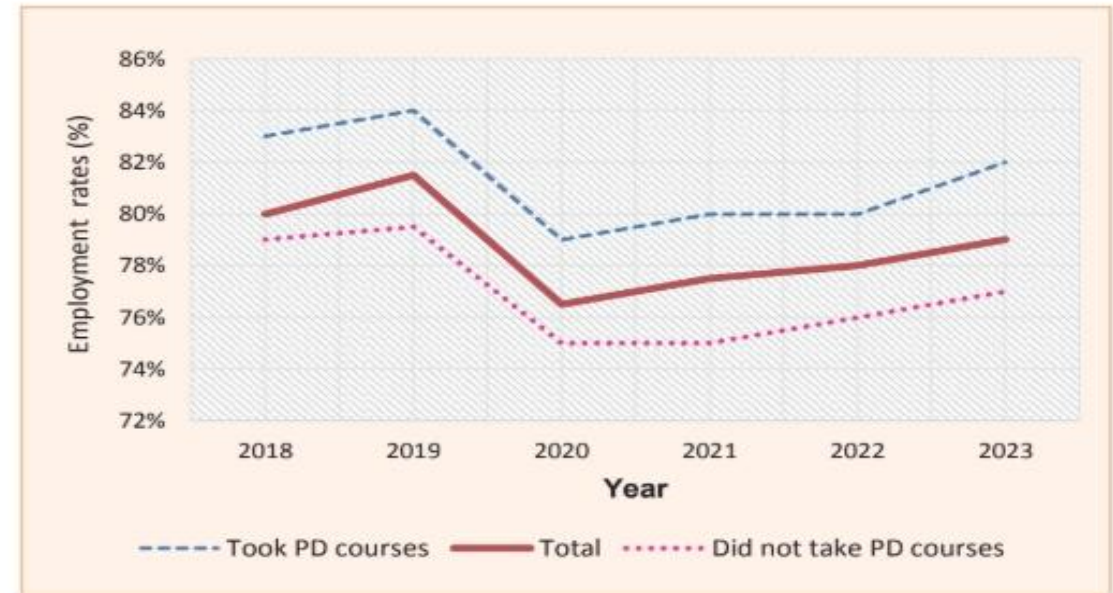


Figure 1 Employment rates of Jin Tai University graduates (2018–2023)



Break Time!





Integrating information

Why integrated L2 speaking?

Higher Education

Research Papers & Thesis – Synthesize data from journal articles, books, and case studies to support their argument or hypothesis.

Literature Reviews – Summarize and analyze existing research to identify gaps, trends, or debates in a field.

Lab Reports – Integrates experimental data with theoretical concepts from textbooks and prior studies.

Case Study Analyses – Examine real-world scenarios by combining qualitative and quantitative data from different sources.

Business Reports & Proposals – Gather market research, financial data, and industry trends to make strategic recommendations.

Feasibility Studies – Integrate technical, financial, and legal information to assess the viability of a project.

Marketing Plans – Combine consumer behavior analysis, competitor research, and financial projections.

Policy Briefs – Synthesize legal, social, and economic data to inform decision-making.

Workplace



Describing contradictory data

Compare the two graphs

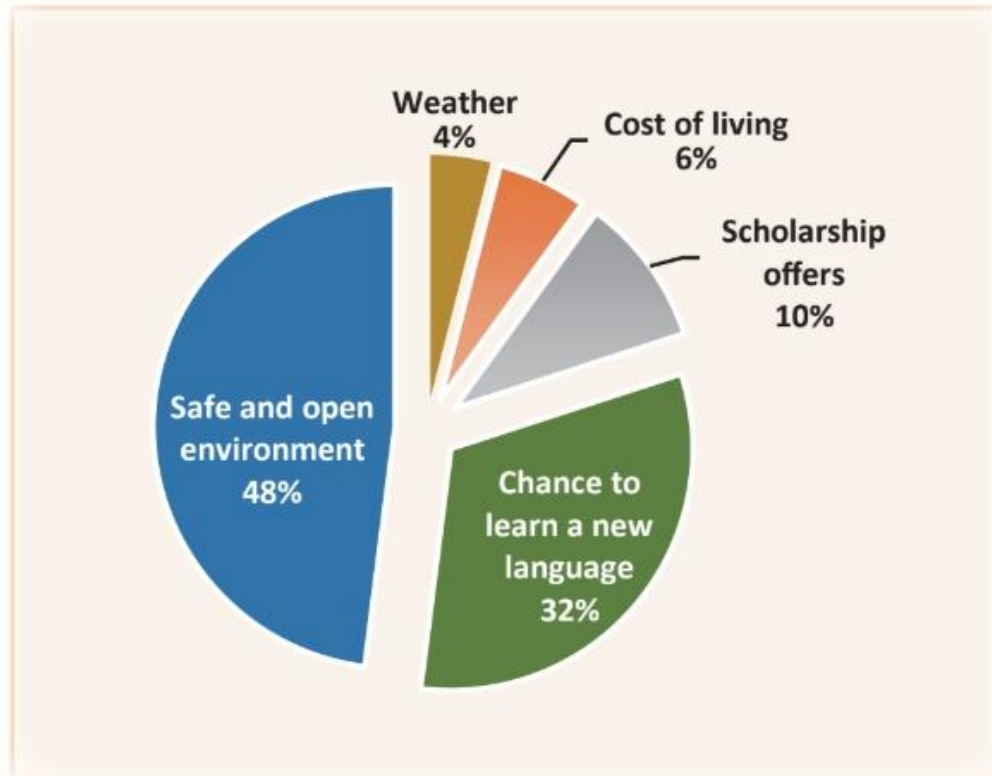


Figure 1 Factors students consider most important when choosing a destination overseas

Note: The results are based on survey responses from 1,600 U.S. students.

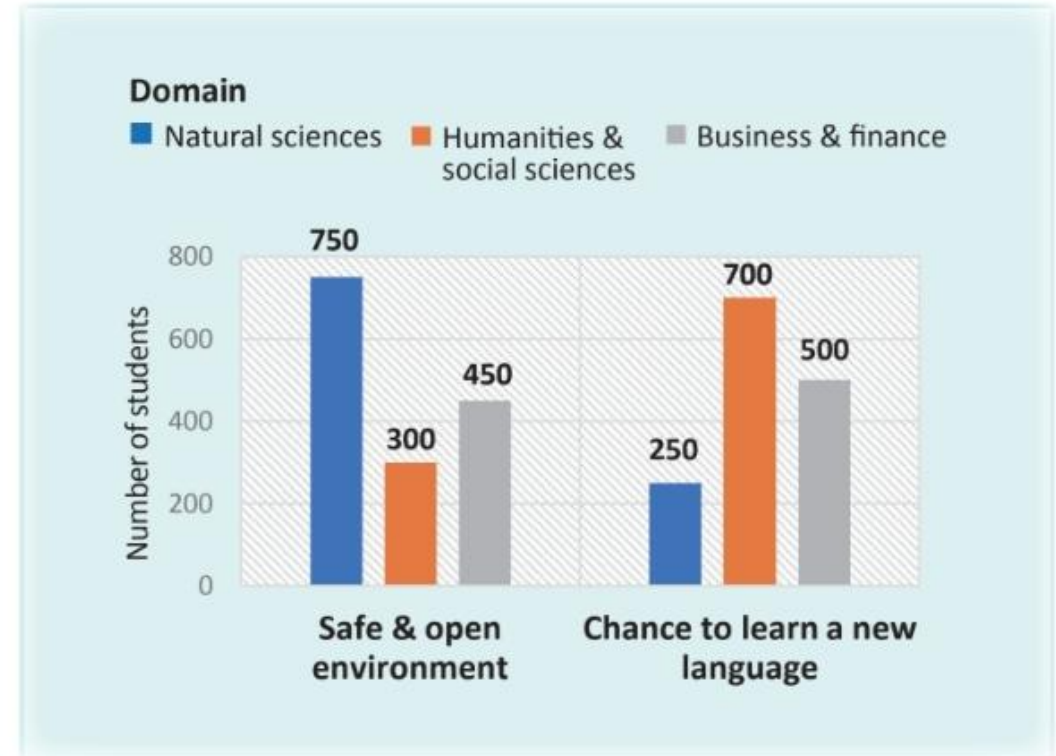
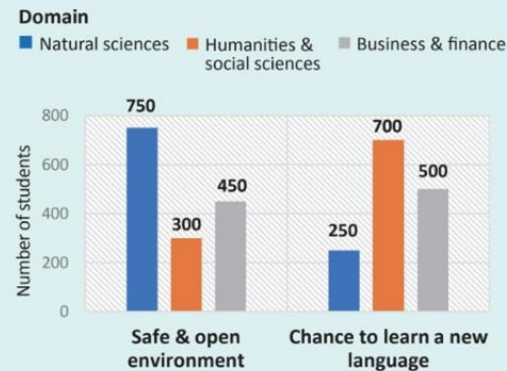
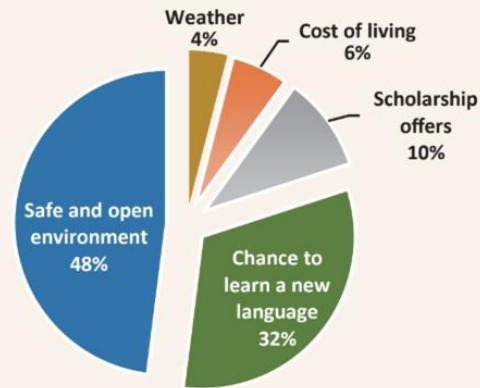


Figure 2 Number of students choosing the top two factors by domain

Note: The results are based on survey responses from 1,600 U.S. students.

Compare the two graphs



The pie chart summarizes the **overall** opinions of students, **while** the bar chart compares the **perspectives** of students from three different domains.

According to the pie chart, 80% of the respondents view a safe and open environment or the chance to learn a new language as important factors. **However**, the bar chart shows that the views of the students from different domains are not exactly the same. For instance, students studying in the domain of natural sciences think that a safe and open environment is more important than the chance to learn a new language. **In contrast**, students studying humanities and social sciences consider the chance to learn a new language to be a more significant factor.



Summarizing & Paraphrasing

Summarizing Skill



Recommended Steps

1. Read the text thoroughly.
2. Identify the main idea.
3. Identify the main arguments.
4. Extract sentences that support the main points.
5. Paraphrase the extracts.

Paraphrasing Skill

Tip #1 - Synonym

	原文	改寫
例 1	"... we cannot assume that this reflects the true state of affairs. "	The rising crime rate ... does not show the real situation.
例 2	"Watching crime ... allows people to feel scared in a safe way. "	News about crime provides people with a safe thrill.

Tip #2 - Passive voice

	原文	改寫
例 3	"... negative news sells." (主動句)	People are generally drawn to negative news. (被動句)





Practice 2

Practice 2

*Jintan College is expecting to recruit more students to its history department over the next few years. Below is an extract from a letter written by the head of the History Department at Jintan College to the college's president and a graph showing the results of surveys given to students of history at the college over recent years. The information contained in each does not entirely support the other. **Please discuss the key differences between the letter extract and the graph.***

Letter extract (written by the head of the History Department)

For the upcoming semester, we need to hire more teaching staff to replace members of the faculty who are moving on to other positions elsewhere. In order to meet the needs of our students, I strongly recommend that we focus our recruitment efforts on those who specialize in local history, specifically that of the eighteenth and nineteenth centuries.

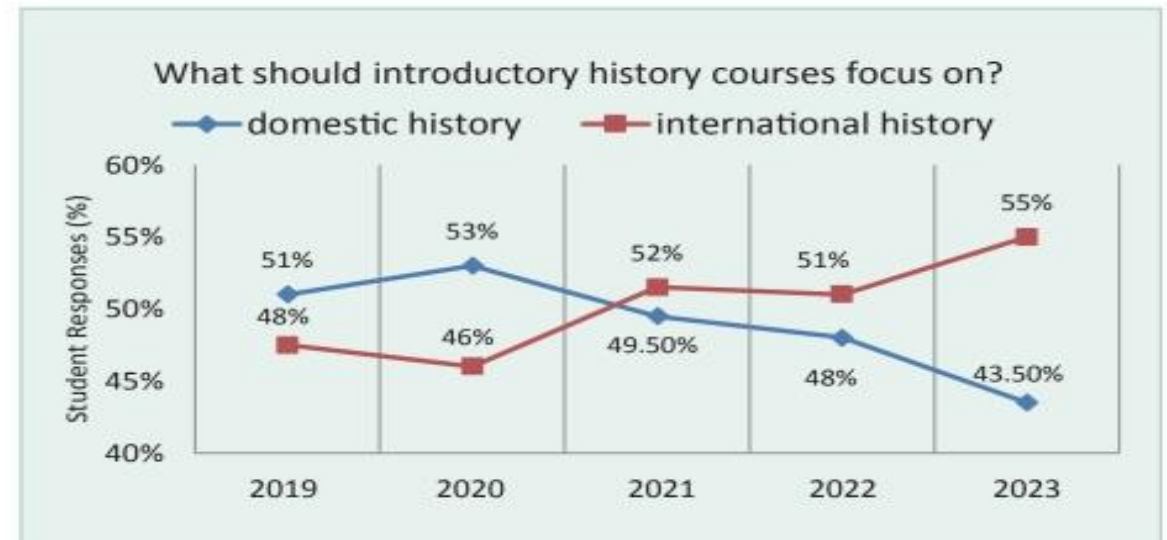


Figure 2 Survey results of history students at Jintan College

Why integrated L2 speaking?

Higher Education

Students are frequently asked to speak based on course materials, such as discussing assigned readings, statistical data, or lectures.

Workplace

Employees often need to discuss and present reports or proposals based on thorough research and analysis.

Everyday life

We often share information we have learned from various sources with those around us, such as a graph we came across or a news story we happened to read.



Class Dismissed!

